

PRODUCT FINISHES

Care Instructions



About PVD finishes:

PVD stands for 'Physical Vapour Deposition'. This process is forming a thin, bonded, metal, or metal-ceramic surface layer that greatly improves the appearance, durability, and function of a part or product. It is more environmentally friendly than traditional coating processes such as electroplating and painting.

The components are sealed in an airtight chamber and a vacuum is created. In this vacuum, an inert gas such as nitrogen is used as a medium, and the negatively charged tap bodies attract the positively charged metallic particles. Different finishes are achieved by combining different metal 'targets' and gases.

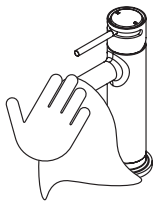
PVD coated products require the same cleaning as any chrome plated products.

How to care for your tapware:

All bathroom products require some care and attention from time to time.

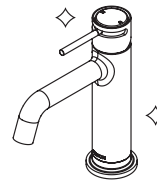
We recommend using a soft microfibre cloth with a solution of warm water and mild detergent to wipe down the mixer once a week to keep your tapware and mixers looking great.

General cleaning



Clean with a soft microfibre cloth

Use a soft microfibre cloth, warm water and mild detergent such as dishwashing liquid to clean your tapware.



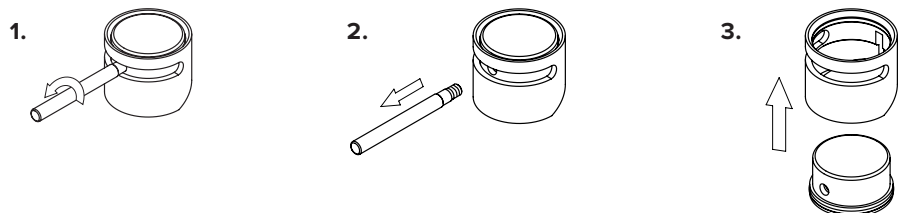
Good as new.

Cleaning the handle:

The handle can be easily disassembled and cleaned in a few simple steps.

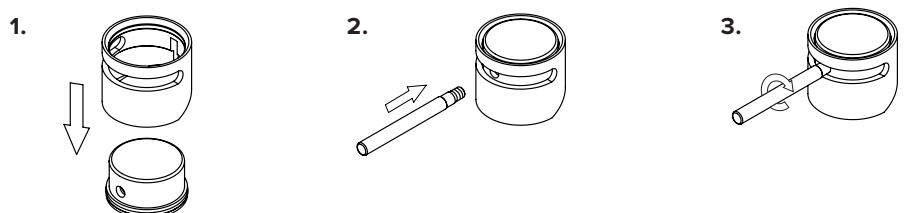
Disassembling:

Simply unscrew and remove the pin lever handle, wiggle up the sleeve cover and clean the areas required.



Assembling:

To reassemble the handle, pop the sleeve cover back over the base. Ensure the pin lever hole is centred in the slot before screwing the pin lever handle in place.



Things to avoid:

Avoid abrasive cleaning solutions and handling the tapware while wearing/using sharp objects such as rings that could potentially scratch the surface of the tapware.

