

FELTON DIGITAL



USER GUIDE

SMARTFLOW

Digital Thermostatic Shower Mixer

FD-SFCSMCA

AUSTRALIA

IMPORTANT SAFETY INFORMATION

Please read these instructions carefully before using this system and keep in a safe place for future reference.

To reduce the risk of electric shock and injury, basic safety precautions, including the following, should always be followed when using electrical appliances. Children **MUST** be supervised at all times when using this shower control. Training should be given to children and vulnerable individuals before permitting them to operate the control. Do not pull on the power cable: this may damage it and cause electric shock. Never operate any appliance with damaged cable or plug. Do not use an appliance that has been dropped or damaged or after any malfunctions.



WARNING

Continuously turning the control wheel in the clockwise direction may override the preset maximum temperature, with consequent risk of scalding. Always take care when operating the control wheel, and do not leave children unattended whilst the product is in operation.

IMPORTANT: Once powered up, the control must be programmed within one hour, this will set the maximum temperatures, maximum run time and hygiene intervals.

FELTON DIGITAL SMARTFLOW™

Felton Digital's Smartflow™ is an entry level digital, thermostatic shower mixer. Utilising Swiss technology, it features three customisable memory settings for your perfect shower temperature and flow of water. It saves water and energy because it heats up to your pre-set shower temperature more quickly and efficiently than a regular shower mixer. Its ease of use, ergonomic operation and thermostatic mixer allows for a safer shower for the whole family – especially children and the elderly.

Regular shower mixers rely on manual control to regulate flow and temperature. When the hot or cold water supply to a manual shower mixer fluctuates, so does the temperature of the shower.

This may cause a sudden, unpleasant cold shock or potentially dangerous hot scald as the user scrambles to adjust the mixer back to a comfortable shower temperature.

Smartflow™ is a thermostatic shower mixer which automatically adjusts itself to maintain the shower temperature you have set it to and shows temperature colour visualisation.

The Smartflow™ was built from a Swiss technology which allows you to alter your water temperature and flow comfortably at the touch of a button. Additional functions can be set on installation, including maximum run time and temperature, diagnostics and clean mode. A safety stop slows temperature increase after 40 degrees, and it has a maximum temperature setting of 45°C.

Memory setting	Three programmable settings for temperature and flow rate
Safe cleaning mode	Disabling the unit for 45 sec
Eco stop	The control unit switches off after 30 minutes by default
Anti-scald	Slower temperature increase after 40°C
Thermal disinfection	Flushing the outlet with hot water for 2 min
Diagnostic	Checking wheel with error indicator
Factory Setting	Resetting back to factory settings



FELTON AUSTRALIA PTY LTD
PO Box 4191, Burwood East, Victoria, Australia 3151
1800 792 760

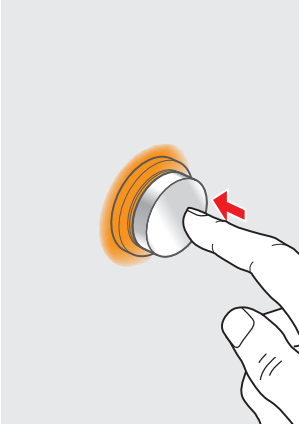


CONTENTS

Operating the water control system

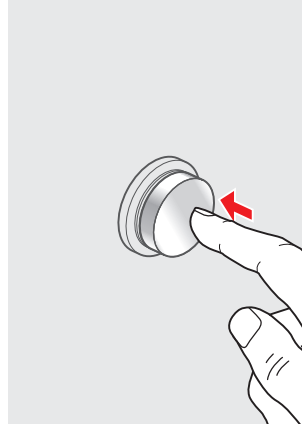
Operating the control	4
Setting the temperature	4
Operating the flow control	5
Setting the temperature and flow memory	5
Advanced activation set up	6-7
Troubleshooting	10
Warranty	11

OPERATING THE CONTROL SYSTEM



To turn ON

Press the control once, the control will illuminate and water will start to flow.

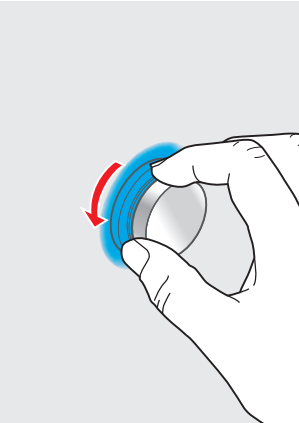


To turn OFF

Press the control once, the water and light will turn off.

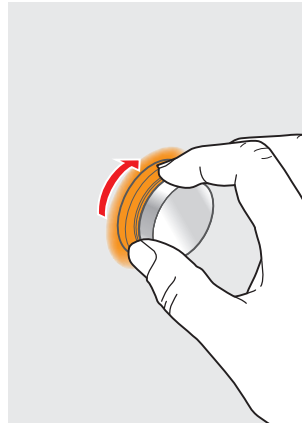
SETTING THE TEMPERATURE

Important: Risk of scalding, please read the [Safety Information](#) before using.



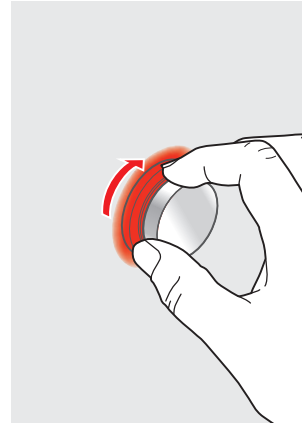
COLD

Turn the control anti-clockwise, the control will illuminate blue and will flash until the set temperature is reached.



WARM

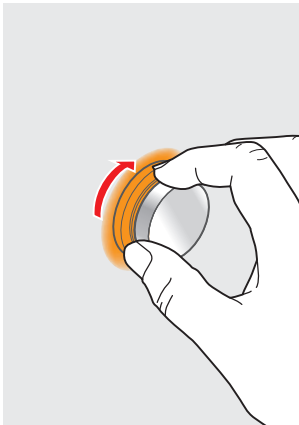
Turn the control clockwise, the control will illuminate Orange, the light will flash until the temperature is reached.



HOT

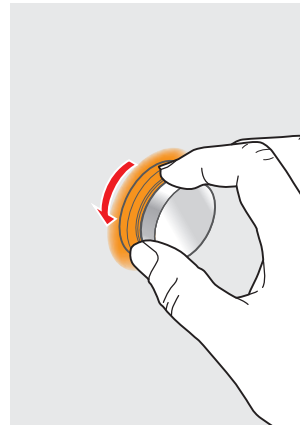
Continue turning the control clockwise, the control will illuminate Red, the light will flash until the set temperature is reached.

OPERATING THE FLOW CONTROL



To increase flow

At the same time, **PRESS & TURN** the control clockwise to increase flow.



To decrease flow

At the same time, **PRESS & TURN** the control anti-clockwise to decrease flow.

SETTING THE TEMPERATURE AND FLOW MEMORY

Configure up to three memory settings on the controller for your desired shower temperature and flow. You may request a Felton Recommended Installer upon installation to set temperature for you.

Default temperature settings	
Memory 1	36°C
Memory 2	37°C
Memory 3	38°C

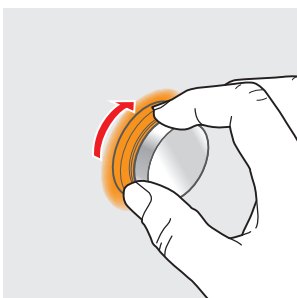
The maximum temperature for memory settings is 40°C.

1.

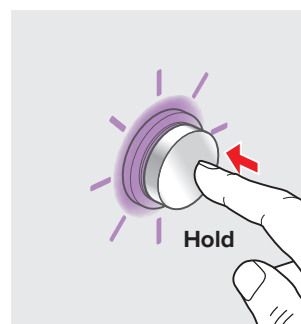
SET MEMORY 1	SET MEMORY 2	SET MEMORY 3
A. IN OFF POSITION	B. IN OFF POSITION	C. IN OFF POSITION
 PRESS 1x	 PRESS 2x	 PRESS 3x

2. Turn to set desired temperature. Colour should change.

Adjust flow by holding and turning the knob.



3. **PRESS & HOLD** the control to save. Once purple light flashes, release immediately.





ADVANCED ACTIVATION SET UP

To access each setting, PRESS & HOLD until colour changes in **the order shown**, then release to access desired menu setting.



IMPORTANT: Once powered up, the control must be programmed within one hour. If the activation set up is not complete within one hour, power off the unit, leave it for 20 minutes, then restart again.

COLOUR INDICATION	MENU FEATURE	HOW TO ACCESS
SAFE CLEANING MODE	This feature allows you to clean your control and shower without turning on your shower during cleaning.	PRESS & HOLD the control for 5 seconds until the GREEN light appears, then release. This will disable the control for 45 seconds to allow the control to be cleaned without turning on. To cancel, press the control again.
DIAGNOSTIC TEST	This feature will run a series of diagnostic checks with lights indicating if your control is OK or malfunctioning. Please see Troubleshooting page on the Smartflow™ Install Guide booklet if error occurs or contact Felton Technical Team at 0800 743 358	PRESS & HOLD the control for 18 seconds until ORANGE light appears, then release. A series of lights will flash to indicate which stage the diagnostic is checking. To cancel, press control again.

COLOUR INDICATOR	
RED LIGHT	Valve is hot
GREEN LIGHT	Valve is off
BLUE LIGHT	Valve is cold
LIGHT OFF	System check complete



2 x **ORANGE** flashes
The control unit is OK
3 x **ORANGE** flashes
Malfunction of the temperature sensor.
Please contact Felton Technical Team at 0800 743 358

THE FUNCTIONS BELOW ARE ONLY ADJUSTABLE FOR 1 HOUR AFTER INITIATION CONSULT FELTON RECOMMENDED INSTALLER UPON INSTALLATION

MAXIMUM TEMPERATURE	This feature allows you to adjust to your desired maximum temperature to avoid accidental scalding from the elderly and children. Maximum temperature on default is 50°C	PRESS & HOLD until light starts flashing WHITE. Release immediately to access. TURN to adjust desired maximum temperature. PRESS again to save maximum temperature. Maximum default temperature is 45°C.
---------------------	---	---

**THERMAL
DISINFECTION**

This feature flushes out the pipes at the hottest temperature your system will allow. this will clean through any limescale and clear any potential bacteria.

Note: If your thermal disinfection indicates a red light at the end of the disinfection, your system has not provided hot water greater than 55°C. This can be ignored as it does not affect the function of the thermal disinfection process.

⚠ ATTENTION: RISK OF SCALDING

PRESS & HOLD until for approx 20 sec until light starts flashing **RED**. Release immediately to access.

Flashing RED: Thermal disinfection flushes out hot water. Automatic stop after 2 minutes. **RED** flashes. Press again to finish thermal disinfection.

To stop disinfection during cycle: PRESS ONCE.

**RESTORE
FACTORY SETTINGS**

This restores all factory settings back to its original default setting except for flow memory.

PRESS & HOLD until light starts flashing **BLUE**. Release immediately to access.

Flashing BLUE twice: Factory setting is restored.

**MAXIMUM WATER
FLOW TIME**

To save water at home, this feature allows you to switch the unit off after 5 seconds to 30 minutes during shower.

PRESS & HOLD until light starts flashing **PINK**. Release immediately to access.

PRESS to set desired water flow time

Flashing PINK twice: Setting is saved.

		DEFAULT										
FLASHING	1	2	3	4	5	6	7	8	9	10	11	12
TIME	5 sec	8 sec	10sec	15sec	20sec	30sec	45sec	1min	5 min	15 min	30 min	Open

**HYGIENE
FUNCTION**

This feature is used for setting up the shower to turn on and regularly flush the system through. The complete flush will automatically stop after 2 minutes.

Note: If your thermal disinfection indicates a red light at the end of the disinfection, your system has not provided hot water greater than 55°C. This can be ignored as it does not affect the function of the thermal disinfection process.

PRESS & HOLD until light starts flashing **YELLOW**. Release immediately to access.

PRESS ONCE to adjust interval flushing at the number of flashes.

Flashing YELLOW twice: Setting is saved.

FLASHING	1	2	3	4	5
TIME	1day	2 days	3 days	7 days	Inactive

DEFAULT

SMARTFLOW™ TROUBLESHOOTING

ISSUE	PROBLEM	TROUBLESHOOT
The device does not function (i.e. the LED light is not on)	The AC adapter is not connected to the mains	Connect device to the mains power
	Mains power failure	Check household fuse box
	The AC adapter is not connected to the TLC temp flow	Follow Step 12 on Smartflow Installation Guide
	TLI-W unit is not working	Follow Step 19 on Smartflow Installation Guide
The water temperature does not match the indicated display	Hot and cold water connections reversed	Check connections are correct
	Hot or cold water stop valve closed or only half opened	Fully open both stop valves
	Kink in supply hose	Check connection hoses
	Connecting pipe blocked	Flush pipes and clean filter
	No hot water	Check hot water tank and instantaneous connections
	Temperature sensor defect	Carry out function «Diagnosis Test» on Smartflow User Guide
	Difference in supply pressure between hot and cold water is greater than 100kPa	Balance pressure to eliminate difference
Constant flow of water	Unit will not turn off	Carry out function «Diagnosis Test» on Smartflow User Guide
The water shuts off before maximum run time has been reached	Flow sensor is defective	Carry out function «Diagnosis Test» on Smartflow User Guide
The device is working but has no water flow	Motors are not calibrated	Carry out function «Diagnosis Test» on Smartflow User Guide
	Stop valves closed	Open stop valves fully
	No water supply	Restore water supply
	Kink in supply hose	Check connection hoses
Interface flashes green	Cleaning mode active	Wait 45 seconds or deactivate via menu
The TLC Temp Flow is damp or wet	Inlet and outlets of TLC temp flow are not properly sealed	Inspect all connections, reseal if necessary
The TLI wheel does not respond to temperature and flow adjustment	The interface elements are connected incorrectly	Follow Step 19 on Smartflow Installation Guide
	The interface is defective	Carry out function «Diagnosis Test» on Smartflow User Guide
	The knob is not running smoothly	Remove and clean knob

If issue persists or not covered by the above troubleshooting, please contact our Felton Technical Team on 1800 792 760 or enquiries@feltontapware.com.au

WARRANTY, MAINTENANCE & CARE

5-year warranty applies to all **Felton Digital** branded products including the electronic hardware and its components.

Where products are promoted as having a “5-year warranty”, Felton Industries Limited guarantees the electronic components of these products (excluding batteries) to be free from defects in materials and workmanship under normal installation, use and service for a period of five (5) years from the date of purchase. Fair wear and tear is expressly excluded.

This warranty is effective for five (5) years from the date of purchase and covers electronic replacement parts only (excluding batteries) and 2 years from the date of purchase for plumber’s labour relating solely to repairing or replacing the Hardware, provided the product is installed by a registered plumber. You must retain proof of purchase of the Hardware (such as an invoice or receipt) and proof of installation by a registered plumber and provide these to Felton on request.

This warranty is for manufacturing defects only and does not cover any damage to product due to abuse, negligence or improper installation. This warranty is given on the understanding that the product is installed by a registered plumber and operated according to Felton’s installation guide and the Australian/New Zealand standard AS/NZS3500. This warranty is provided to persons who are a “consumer” under the Consumer Guarantees Act 1993 only and for use in domestic/residential dwellings only (not for commercial use).

This warranty is subject to any other rights or remedies that you may have under the Consumer Guarantees Act 1993 (or any other applicable legislation) and to Felton’s Terms of Trade.

This **5-year warranty** does not cover:

- 1) any consumable items (e.g. batteries, filters, installation fittings) supplied with the products.
- 2) damage, problems or unsatisfactory performance caused to the electronic hardware by:
 - a. Faulty or incorrect electrical wiring, incorrect power supply, voltage fluctuations, over voltage transient spikes or electromagnetic interference not originating within the electronic hardware.
 - b. Incorrect or poor installation or application
 - c. Operation at conditions outside the operating conditions specified in the Felton Digital technical or sales data applicable to that electronic hardware.
 - d. Reconfiguration of the digital interface by the user – this is considered a service not a warranty.

For technical assistance please ring: 1800 792 760 or enquiries@feltontapware.com.au

CLEANING AND MAINTENANCE

Only clean the control with soapy water, do not use abrasive cleaners as these could damage the chrome and would not be covered under any warranty.

Please do not open the processor unit as this will invalidate your warranty.

SERVICING AND CONTACT INFORMATION

In the likely event that you are experiencing difficulties with your Felton Digital product, please contact our Felton Technical Team on 1800 792 760 or enquiries@feltontapware.com.au



FELTON AUSTRALIA PTY LTD

PO Box 4191, Burwood East, Victoria, Australia 3151
1800 792 760



@feltontapware



/feltonltd



/FeltonIndustriesLimited



@feltonltd



/felton-industries-limited